



AXi-CANBOX1 INSTALLATION MANUAL

PLEASE REVIEW THIS INSTALLATION MANUAL CAREFULLY BEFORE BEGINNING ANY WORK



PROUDLY MADE IN USA

Rev. 2.8 080415

COMPATIBLE PLUG & PLAY WIRING HARNESSSES

AXi-JAGVIM-C	AXi-GIG-C	AXi-GIGCAM-C
AXi-GIG-AV-C	AXi-GIG-CAMAV-C	AXi-QUAD-C
AXi-QUAD1-CAM-C	AXi-QUAD1-AV-C	AXi-RRVIM-C
AXi-SYNC-C	AXi-SYNCAM10-C	AXi-SYNCAM12-C
AXi-UCT22-C	AXi-UCT22-CAM-C	AXi-UNI-C
AXi-UNI-CAM-C		

Tech Support: 844-AXX-ESSI WWW.AXXESSINTERFACES.COM



Table Of Contents

PRECAUTIONS.....3

WIRING LEGEND AND DESCRIPTION.....4-5

ASSIGNMENT OF SWITCHES.....6

FEATURE PROGRAMMING.....7-8

DEVICE SETTINGS MENU.....9

FAQ.....10

QUICK START GUIDE11-12

IMPORTANT WARNING

This product includes instructions for installation which must be carefully followed. The instructions are worded in such a manner to assume that the installer is capable of completing these type of electronic installations. If you are unclear as to what you are instructed to do or believe that you do not understand the instructions so as to properly and safely complete the installation you should consult a technician who does have this knowledge and understanding.

Failure to follow these instructions carefully and to install the interface as described could cause harm to the vehicle or to safety systems on the vehicle. Interference with certain safety systems could cause harm to persons as well. If you have any questions in this regard please call the Metra Help line at 1-844-299-3774 and for ordering questions call Metra at 1-800-221-0932.



PRECAUTIONS: Please read before you start the installation

- Please study these instructions carefully before installing AXXESS.i interface.
- Many new vehicles use low-voltage or data-bus systems that can be damaged by test lights and logic probes. Test all circuits with a digital multi-meter before making connections.
- Do not disconnect the battery if the vehicle has an anti-theft-coded radio, unless you have the radio code.
- If installing an external push button switch, check with the customer about where to install the switch.
- To avoid accidental battery drainage turn off the interior lights or remove the dome light fuse.
- Roll down a window to avoid being locked out of the car.
- Use of this product in a manner different to its intended way of operation may result in property damage, personal injury, or death.
- Set Parking brake.
- Remove the negative battery cable.
- Protect fenders before starting.
- Using protective blankets to cover front seats, interior of the vehicle and center console.
- Always install a fuse 6-12 inches away from AXXESS.i interface, 5 amp fuse should be used.
- Always secure AXXESS.i interface with Velcro or double side tape to prevent rattling of the interface.
- When securing AXXESS.i interface make sure that panels can be closed back easily.
- Use electrical tape on all you connections and splices, do not leave any exposed connections.
- Route all wires along factory harnesses, try not to drill or make any unnecessary holes.
- Make sure you are not connecting to any data wires; always check your connections with a multi-meter.
- Always use help of a professional installer to prevent any damage to the vehicle or AXXESS.i interface.



Wiring legend and description

DO NOT CONNECT WIRES BELOW WHEN USED IN CONJUNCTION WITH AXi PLUG AND PLAY HARNESS.

Red Wire: Constant +12V power input.

Must connect to constant power source, can usually be found at the main power plug on the back of the radio or at another source where AXi-CANBOX1 is installed. Do not connect to accessory or ignition power source. Connecting to +12V constant power will not drain battery, interface goes into sleep mode after key is removed and doors are locked.

Black Wire: Ground connection.

Must connect to a ground source, can usually be found at the main power plug on the back of the radio or at another source where AXi-CANBOX1 is installed. Do not connect to chassis ground or radio chassis.

CAN Wires: If installation is going to be performed without plug and play harness CAN High and CAN Low Wires must be cut and the AXi-CANBOX1 will be installed in line.

Orange Wire: CAN High radio side.

Connect orange wire to radio side of vehicles CAN High wire.

Green Wire: CAN Low radio side.

Connect green wire to radio side of vehicles CAN Low wire.

Yellow Wire: CAN High car side.

Connect yellow wire to car side of vehicles CAN High wire.

White Wire: CAN Low car side.

Connect white wire to car side of vehicles CAN Low wire.

Blue Wire: External activation switch.

Used only in certain applications.

Purple Wire: Not used, do not connect.

Micro USB: Used for programing and updating

AXi-CANBOX1 must be programmed with a vehicle specific software before installation starts. Please see pages 7-9 for details.

Status LED: Blinks when CAN wires properly connected.



Wiring legend and description

Additional connections when AXi-CANBOX1 is installed with AXi-UNI-CAM-C camera harnesses.

Connections in addition to wires shown on page 4.

Camera Input 1: Factory or aftermarket camera input.

Camera Input 2: Front camera input.

Camera Input 3: Left camera input.

Camera Input 4: Right camera input.

Camera Output: Common output of camera 1,2,3 and 4.

If vehicle is equipped with factory rear view camera, factory rear view camera will be routed to camera input 1, and camera output will be connect to camera input of factory headunit, this will allow to installation of additional cameras to factory headunit, such as front and side view cameras.

Video Input 1: Video input from aftermarket video source or factory DVD player.

Video Input 2: Video input from aftermarket video source.

Video Output: Common video output of video input 1 and 2.

If vehicle is equipped with factory DVD player, factory DVD player will be routed to video input 1, and video output will be connect to video input of factory headunit, this will allow an installation of additional video sources to factory headunit.

Fig.1





Assignment of Switches.

Switches are preset to OFF position by default. In a few specific installation cases switches may need to be set to ON position, in case where switches need to be set to ON positing this information will be available in AXi harness installation manual.

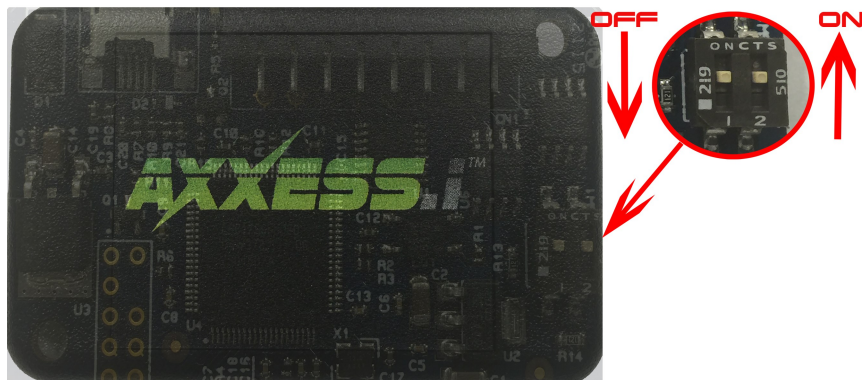
For most installations fig.2 and fig.3 shows correct switch position.

To access switches remove cover by removing two screws in each corner of AXi-CANBOX1

fig.2

ON CTS	
ON	ON
OFF	OFF
1	2

fig.3



AXXESS.i™
Feature Programming

All installations of AXI-CANBOX1 require programming prior to installation.

Prior to starting an installation, features and setting of AXI-CANBOX1 interface must be adjusted for the interface to operate correctly. Vehicle specific software must be flashed into the interface.

To update, please follow instructions below:

Download and install AXXESS.i online updater on your computer.

There will be 3 components installed on your PC

1. AXXESS.i online updater
2. Database Connector
3. TeamViewer

AXXESS.i online updater is only compatible with Microsoft Windows based PC.

After installation is complete go to your start menu locate folder with AXXESS.i online updater and run the program.

We have built in AXXESS.i Team Viewer feature and live chat for tech support in case you have any question during update and require immediate support.

On the bottom left corner of the AXXESS.i online updater you will find a button for remote support.

Click remote support button and TeamViewer will open.

It will generate one time ID and Password
(ID and password changes every time program is open)

Provide us with this information and we will be able to help you remotely if such help is required. See fig.6 on page 8.

fig.4

Allow Remote Control

Please tell your partner the following ID and password if you would like to allow remote control.

Your ID **563 340 42**

Password **192**

Connect AXi-CANBOX1 to your PC with micro USB cable. (cable not supplied must be purchased separately)

Step One: Select make model year or click search to show all vehicles.

Step Two: select vehicle software for installation.

Step Three: Click install.

If installing extra cameras click on setting button to open up setting menu screen.

This is your initial view fig.5 shown below.

MG1160U-071315-185739 Settings Download Manual

Make, Model and Year Function
GM ALL ALL 2000-2016 Factory test software

MAKE MODEL YEAR INSTALLED FUNCTIONS INSTALLED

Search

Make Model Year Search

ALL MAKES ALL MODELS ALL YEARS

My vehicle has a manual transmission

8 records found for ALL makes ALL models ALL years

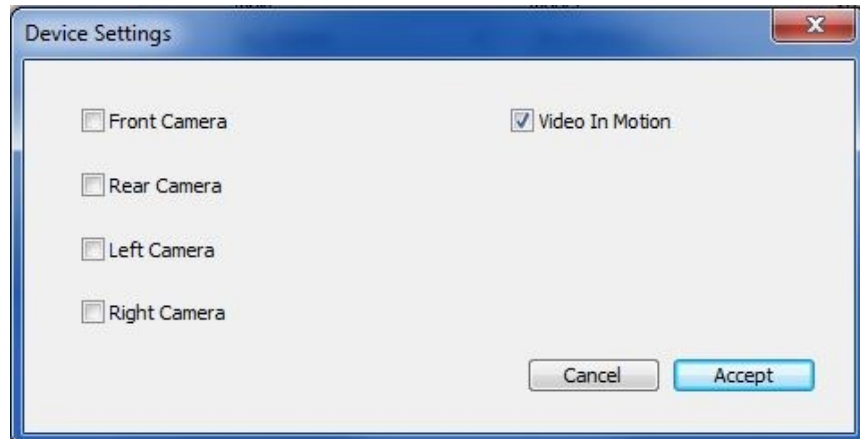
Vehicle make	Vehicle model	Year	Description	Update
CADILLAC	CTS	2008-2014	Video-in-motion	Free
CADILLAC	ESCALADE	2007-2014	Video-in-motion	Free
CADILLAC	ESCALADE	2015-2016	Video-in-motion	Free
CADILLAC	SRX	2010-2012	Video-in-motion	Free
CADILLAC	STS	2005-2011	Video-in-motion	Free
GMC	ACADIA	2013-2016	Video-in-motion	Free
GMC	TRUCK	2015-2016	Video-in-motion	Free
GMC	YUKON	2010-2012	Video-in-motion	Free

Attention! If you press Install button, your device will be erased, the current software will be lost and selected software will be installed (you will need an activation code for paying update)

Install



Device Settings Menu



Front Camera-Place check mark if installing aftermarket front view camera. (make sure front camera doesn't have reverse image)

Rear Camera-Place check mark if installing aftermarket rear view camera.

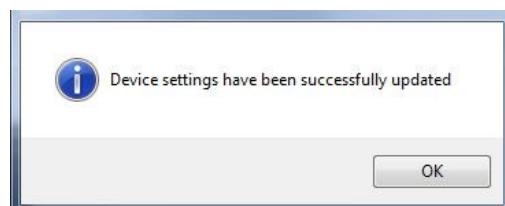
Left Camera-Place check mark if installing left side view camera.

Right Camera-Place check mark if installing right side view camera.

Video-In-Motion-Place check mark to enable video-in-motion feature.

Refer to vehicle specific installation manual for camera operations and controls.

If any changes are made, press ACCEPT button and all settings will register to the AXi-CANBOX1.



FAQ

Q: I start the car but radio/screen/nav doesn't turn on?

A: please check that CAN wires are connected properly and LED on AXi-CANBOX1 is blinking.

Q: I shift vehicle in reverse gear I get a blank screen but no camera image on the screen?

A: In all installation cases of AXi-CANBOX1 camera input is already present in a vehicle from factory, AXi-CANBOX1 only activates this input. If blank screen is displayed when vehicle in reverse, check camera RCA and power connection.

Q: When I try to use the camera while driving, the screen goes blank and no camera is shown?

A: Make sure camera is connected to +12V Accessory power and not to reverse lights.

Q: Video-In-Motion or Navigation-In-Motion is not working when driving?

A: This features are designed for off-road use only and never when operating vehicle on public roads, different makes and models have different activation sequences, ex: press mute button 4 times on the steering wheel, by activating video in motion via activation sequence you are acknowledging that you are either off road or in controlled environment away from public roads.

Q: When vehicle is started it takes long for radio to boot up?

A: AXi-CANBOX1 must be connected to constant power not accessory power.



QUICK START GUIDE

Thank you for purchasing AXXESS.i AXi-CANBOX1

Video-In-Motion: This feature is designed for off-road use only and never when operating vehicle on public roads, different makes and models have different activation sequences, ex: press mute button 4 times on the steering wheel, by activating video in motion via activation sequence you are acknowledging that you are either off-road or in controlled environment away from public roads.

Navigation-In-Motion: This feature is designed for off-road use only and never when operating vehicle on public roads, different makes and models have different activation sequences, ex: press mute button 4 times on the steering wheel, by activating navigation in motion via activation sequence you are acknowledging that you are either off-road or in controlled environment away from public roads.

Control-In-Motion: This feature is designed for off-road use only and never when operating vehicle on public roads, different makes and models have different activation sequences, ex: press mute button 4 times on the steering wheel, by activating control in motion via activation sequence you are acknowledging that you are either off-road or in controlled environment away from public roads.

Rear View Camera Input/Camera-In-Drive: if you have installed a back-up camera, your aftermarket camera will turn on automatically in reverse.

You can use the camera while in drive, please ask your installer for details on operating this feature.

(AXi-CANBOX1 interface and Rear-View Camera In-Drive must be configured by your installer for this feature to operate as described above)

DISCLAIMER: WARNING!!! WARNING!!!

AXXESS.i is designed to be used only when the vehicle is immobilized. The driver is responsible for maintaining full attention while operating a motor vehicle. The removal or bypassing of safety features in AXXESS.i products will result in termination of warranty. Using AXXESS.i unit improperly may result in injury, citation or arrest by authorities. Therefore Metra Electronics owners and employees are not responsible for unauthorized use.

TEAR HERE

AXXESS.i Video Integration Solutions
WWW.AXXESSINTERFACES.COM



**FOR INFORMATION ON THIS AND OTHER
AXXESS.i SOLUTIONS PLEASE VISIT
WWW.AXXESSINTERFACES.COM**

TEAR HERE

**AXXESS.i Video Integration Solutions
WWW.AXXESSINTERFACES.COM**